

HOLIDAY & SHORT BREAK GUIDE

VISIT
GREAT
YARMOUTH



FROM DAYBREAK TO NIGHTLIFE...

For early birds to night owls, families to solo visitors, there's always something going on in Great Yarmouth and around to keep everyone entertained and happy.

Just minutes from the bright lights, buzz and adrenaline-filled rides on Great Yarmouth's Golden Mile, you can find the peace and tranquillity of the beautiful Broads national park, rare animals at wildlife parks, rolling countryside punctuated by Norfolk's famous old windmills, pretty villages and bustling market towns.

On top of all that, Great Yarmouth oozes history and heritage at every turn, a melting pot of times past and culture. Its town wall is one of the last surviving medieval walls and its majestic buildings tell the story of the town's rich history as a major port and leading trading centre.

For culture vultures, the area is a hub of art, theatre, performance and creativity with a diverse cultural offer.

Great Yarmouth and its surrounding area have welcomed visitors for centuries and is geared up to create lifelong memories all year round.

Even climate is on its side – it is one of the driest and sunniest places in the country.

With landscapes and views that take your breath away, 15 miles of stunning beaches, wildlife, flora and fauna, more than 60 tourist attractions delivering family fun and businesses that give a warm Great Yarmouth welcome to visitors from everywhere, it is proud of its reputation as a first choice destination for a short break, holiday or overnight stay for every season.



GREAT YARMOUTH IS A STANDOUT GETAWAY WINNER

Explore, enjoy and discover the unexpected.

Just north of Great Yarmouth, sits the holiday hub of Hemsby with its unspoilt beach, variety of seaside attractions and abundance of quality accommodation.

Regular buses link this popular resort to Great Yarmouth. There's always something going on.

If you're a foodie, you're in for a treat as the area scores highly, with welcoming cafes, restaurants, food stalls, street food and pubs, offering everything from traditional British dishes to Greek, Portuguese, Asian and US themed – whatever your taste or whatever you fancy, you'll find it in Great Yarmouth and the surrounding area.

Within the second most complete medieval town wall in England, you'll find the unique Rows rich with the town's fishing history. Close by are the Roman ruins at Burgh Castle.

WELCOME TO GREAT YARMOUTH



GREAT YARMOUTH'S GOLDEN MILE

06



HEMSBY & NEWPORT

08



GORLESTON -ON-SEA

10



DAYS OUT

18



AFTER DARK

20



SUMMER FIREWORKS

22



TOWN CENTRE & SHOPPING

30



ATTRACTIONS

32



ACCOMMODATION

44



WINTERTON
-ON-SEA

12



THE
VILLAGES

14



BEAUTIFUL
BEACHES

16



BROADS &
COUNTRYSIDE

24



CULTURAL & HERITAGE
GREAT YARMOUTH

26



EATING
OUT

28



GREAT YARMOUTH'S GOLDEN MILE



Buzzing, fast, fun and bright - Great Yarmouth's Golden Mile has got it all going on.

Attraction and activity-packed piers, the rides of the renowned Pleasure Beach, the world-famous Hippodrome Circus, arcades, crazy golf and the new Marina Centre make Great Yarmouth's Golden Mile the place to be.

From day to night, when the pretty decorative lighting illuminates the fun-filled stretch, there is something for everyone.

To travel the seafront, Great Yarmouth's famous horse-drawn landaus give you a chance to rest tired legs. Children will love the seafront train and getting to know the donkeys for a traditional seaside donkey ride.

Activities range from adventure golf, a ride on the big wheel for views stretching for miles, the renowned Merrivale Model Village where world-famous Banksy left his mark and Sea Life Great Yarmouth and a cinema.

Nestled among the arcades and attractions is the new landmark Marina Centre, opened in 2023, with its swimming pool, gym and café, the spectacular circular Hippodrome Circus, the last remaining Victorian circus in the country, ten-pin bowling, fairground rides, gardens, restaurants, tearooms, pubs and so much more.

And always remember to look up when making your way along the Golden Mile - there's always a surprise of unusual architecture on the mix of multistorey buildings.

North of the Britannia Pier lies the restored Venetian Waterways, a beautiful peaceful haven to stroll through its imaginatively planted ornamental gardens, beside its 'canals' exploring its islands, and perhaps take out a boat on its boating lake before a hot chocolate at its café and watch the world go by. It is a renovation of the original 1928 waterways and its boating lake is the last of its kind in the region and a popular haven for ducks and heron.







HEMSBY & NEWPORT

Just seven miles north of Great Yarmouth, separated by stretches of sandy beach lies the linked village resorts of Hemsby & Newport, packed with activities day and night.

A buzzing self-contained resort, where the whole family can enjoy go-karting, amusements, crazy and mini golf, family fun parks, bars and restaurants.

In the summertime, just on the outskirts of the resort, look out for the incredible maize maze and lose yourself in the myriads of twists and turns.

Like Great Yarmouth, the sky over the beach comes alive with spectacular fireworks every week throughout the summer.



GORLESTON -ON-SEA

Rated the UK's best beach on Tripadvisor in 2023, and the setting for scenes in the film Yesterday, Gorleston is a fabulous destination just south of Great Yarmouth.

Head to Gorleston Cliffs for a view that will take your breath away of the stunning bay with the wide, sandy beach, which delivers all year round for walks, soaking up the sun, building sandcastles or a crisp winter walk.

Its model yacht pond and children's splashpad, shops, cafes, amusements and amenity area, puts everything you need close by.

It's also renowned for windsurfing, surfing and body-boarding.

Take a stroll through the cliff gardens and a grand promenade with pitch & putt, a play area for children and beautiful gardens.

By the harbour, is the pier where you can watch boats serving wind farms off the coast coming in and out where once vessels from the herring fleet would sail.

There's also an Edwardian theatre with shows throughout the year and the historic Ocean Room where shows, events, and dancing occurs.

Take a short walk from the beach and end up in Gorleston's bustling high street, a hive of independent shops and household names, cafes, restaurants and pubs. Gorleston, a real hidden gem, perfect for you to stay and explore.



WINTERTON -ON-SEA

The pretty ancient fishing village of Winterton-On-Sea nine miles north of Great Yarmouth is a real treasure to visit.





Its sandy beach backed by dunes and paths through rambling marrams grass makes it hugely popular with dog walkers and families – as well as its all-round well-earned reputation for being especially canine-friendly.

Sandwiched between the sea and the Norfolk Broads, it is a beautifully unspoilt village with traditional brick and flint cottages, quirky little shops, tearooms and a 300-year-old pub, Fishermans Return.

Winterton Dunes is a designated site of special scientific interest and a National Nature Reserve of 109 hectares, which is home to rare flora and fauna, including rare little terns that nest on the beach.

Seals popping up their heads in the sea or venturing on to the beach are familiar sights in the summer. In the winter breeding season, you can view seals and their pups from afar.



THE VILLAGES

There are surprises around every corner in the villages around Great Yarmouth.

Highlights include Filby, famous for its tremendous summer annual floral display, Filby in Bloom, and its wins of the village category of Britain in Bloom.

The community is so committed to its colourful reputation, it keeps an all-year-round display to delight visitors.

Rowing boats accessible to wheelchair users can be hired. Fishing platforms are also available suitable for wheelchair users.

At Burgh Castle, you'll find one of the best preserved Roman monuments in Britain, the late 3rd century Saxon Shore fort, built as part of the Roman network of coastal defences.

Three stone walls survive, around which a wildlife haven has developed, offering panoramic views over Breydon Water.

If you're looking for a quiet stretch of beach for a long walk, Scratby, below low sandy cliffs, is perfect, stretching for miles in both directions – to Caister-on-Sea, or even Great Yarmouth south, or Hemsby Beach, and on to Winterton Dunes National Nature Reserve to the north.

Popular for fishing and swimming, dogs are allowed at Scratby all year round. Surfers love the beach in winter for its decent waves.

Another highlight is the Ormesby area.

Ormesby St Michael is a tiny village at the furthest edge of the unique Trinity Broads, situated between Ormesby Broad to the north and Ormesby Little Broad to the south, both part of the Trinity Broads.

The Trinity Broads are a series of five land-locked Broads around the villages of Filby, Rollesby and Ormesby.

They remain virtually undisturbed because their only link to the main river is a shallow, unnavigable tributary of the River Bure called Muck Fleet, so they were designated a Site of Special Scientific Interest in 1998.





The Site of Special Scientific Interest's are areas rich in birdlife and natural beauty. Carefully regulated sailing, boating and fishing are allowed, respecting the natural environment.

Ormesby St. Margaret is built around two large village greens and has a medieval church.

Martham is one of the most northerly villages in the borough, which has several examples of fine Georgian houses, a large village green and duck pond with a lovely selection of local shops, pubs and restaurants.

Nearby is Martham Broad with a 140-acre nature reserve, which is well worth exploring.

Caister-on-Sea, is another old fishing village seaside resort and now busy holiday destination.

Caister's history also dates back to Roman times with a fort built around AD 200 as a base for a unit of the Roman army and navy.

The name 'Caister' derives from the Anglo-Saxon word 'ceaster' meaning 'Roman fort'. Caister has a rich offshore lifeboat history dating back to 1791 and operates an independent lifeboat today.

On the banks of the River Waveney, St Olaves is a great place for hiring boats to explore the beautiful Broads. The remains of a 13th-century Augustinian priory, St. Olaves Priory, include parts of the refectory, cloisters, and the priory mill.

South of Gorleston-on-Sea lies Hopton-on-Sea, home to a range of holiday parks and accommodation. An established holiday centre, there are many places to stay, visitor amenities, places to eat, drink and play. Its sandy beach stretches down the coast towards Suffolk, running alongside low grassy cliffs.

Potters Resort, awarded Five Star Holiday Village status with VisitEngland for multiple years, was the first permanent mixed use holiday centre in the UK back in 1920. It has continued to build its premier reputation and is home to the World Indoor Bowls Championship held every January.



BEAUTIFUL BEACHES

Our amazing coastline has some of the most beautiful and unspoilt beaches in the UK.

Whether you enjoy sunbathing, birdwatching, playing beach cricket or flying a kite you will always find the perfect spot.

With the quieter beaches situated north and south of Great Yarmouth, you can also pull up your deckchair at one of the more vibrant areas of Marine Parade, which are surrounded by bouncy castles and amusements.

All year round our beaches are popular for walking, so wrap up in the winter and enjoy a crisp but picturesque stroll.



WINTERTON-ON-SEA

Quiet, soft, pale sandy beach with sand dunes next to a Nature Reserve.

HEMSBY & NEWPORT

Lively village resorts with shops, amusements, attractions and cafés, and home to Hemsby Inshore Rescue Service. Blessed with sand dunes and a stunning golden, sandy beach.

SCRATBY

Curving, ochre-coloured, wide, quiet sandy beach with cliffs. Access via slope and steps.

CALIFORNIA

Quiet, wide, sandy beach with stone sea defences. Access via slope and steps.

CAISTER-ON-SEA

Long esplanade and sand dunes lead to a wide, sandy, golden beach.

NORTH BEACH - GREAT YARMOUTH

Wide sand dunes, perfect for dog walking at any time of the year, lead to a quiet sandy beach facing Scroby Sands Wind Farm. The renowned Venetian Waterways, cafés, and bowling greens are nearby.

CENTRAL BEACH - GREAT YARMOUTH

Runs alongside vibrant Marine Parade. Wide, golden, traditional family-fun beach with donkey rides, bouncy castles and trampolines. Beach wheelchairs are available for hire and must be pre booked. For information on how to book follow this link [Beach Wheelchairs - Great Yarmouth](#)

SOUTH BEACH - GREAT YARMOUTH

Quiet, wide, sandy beach with a few sand dunes stretching from Wellington Pier to the Outer Harbour. Cafés and attractions are nearby, with amusements on Marine Parade.

GORLESTON-ON-SEA

Huge, wide, curving golden sandy beach gently sloping towards the sea with children's splash pad and yacht pond. Shops, cafés and benches on a long promenade with a bandstand at the bottom of grassy cliffs. At the top of the cliffs there are many things to see and do including pitch and putt, children's play areas, gardens, trim trail and bowling greens.

HOPTON-ON-SEA

Beach punctuated with groynes. Pedestrian access to beach via slope. Holiday Village guests have direct access to the beach from their resorts.



DAYS OUT

More than 60 attractions delivering family fun for every generation all day, every day, is why people return year after year.

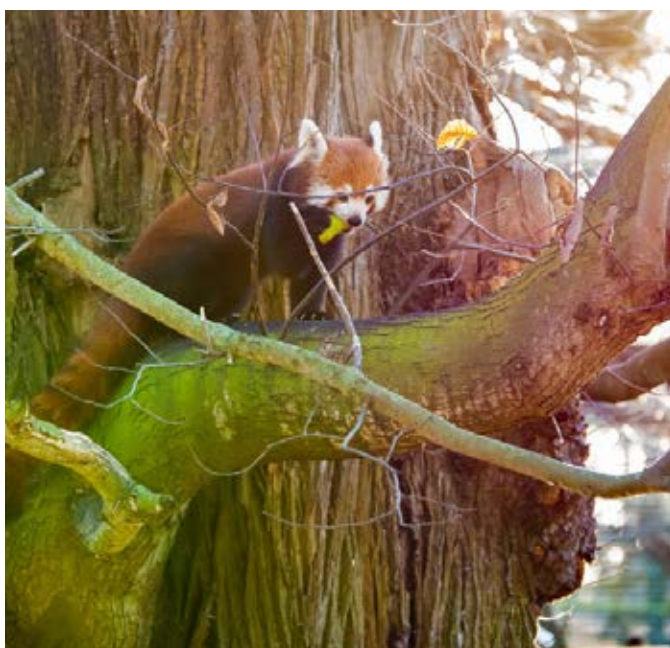
A rich variety of activities offers more than enough to keep everyone busy and entertained.

If you are an animal lover head to Thrigby Hall Wildlife Park to get up close and personal with some tigers, red pandas, crocodiles and reptiles, while enjoy the marine life and sea creatures at Sea Life Great Yarmouth.

Or if thrill seeking is your thing, enjoy a high-octane day of white-knuckle rides at the Golden Mile's Pleasure Beach.



If you fancy action packed, it's all on your doorstep, with theme and fun parks and a day at the races at the world-renowned Great Yarmouth Racecourse where you can watch leading jockeys and horses thundering past.



AFTER DARK

The fun carries on when the sun goes down. Night life is bright, varied and lively, encouraging visitors to let their hair down and enjoy the most of their holiday break, exploring the sights, sounds and tastes of everything there is to offer.



There's live music, live theatre, clubs, restaurants and a host of pubs to enjoy.

If you fancy an evening out at the circus, head to the Hippodrome, where the purpose-built ring fills with water for synchronised swimmers and dancers to perform beneath dare devil trapeze artists.

The Wellington Bowl at the Wellington Pier is a favourite for family with its 10-bin bowling experience with amusements, while during the summer months The Britannia Pier is the place to be to see some of the biggest names in entertainment.

The pier is undergoing an exciting renovation by its owners, while retaining the historical fabric of the landmark.

If you enjoy a night at the theatre, St George's in Great Yarmouth and The Pavilion Theatre in Gorleston have a packed programme all year round.

The Pavilion is the epitome of Edwardian architecture and was built in 1901 by the architect J.W. Cockrill.

St. George's Theatre in Great Yarmouth is another stunning historic building, originally a consecrated church, but was deconsecrated in 1950. Local arts groups have ensured its survival.

Situated within another architectural gem, watch the latest blockbuster on one of Arc Cinema's five screens in luxurious leather armchairs with generous legroom, which is situated opposite the iconic Britannia Pier.





GREAT

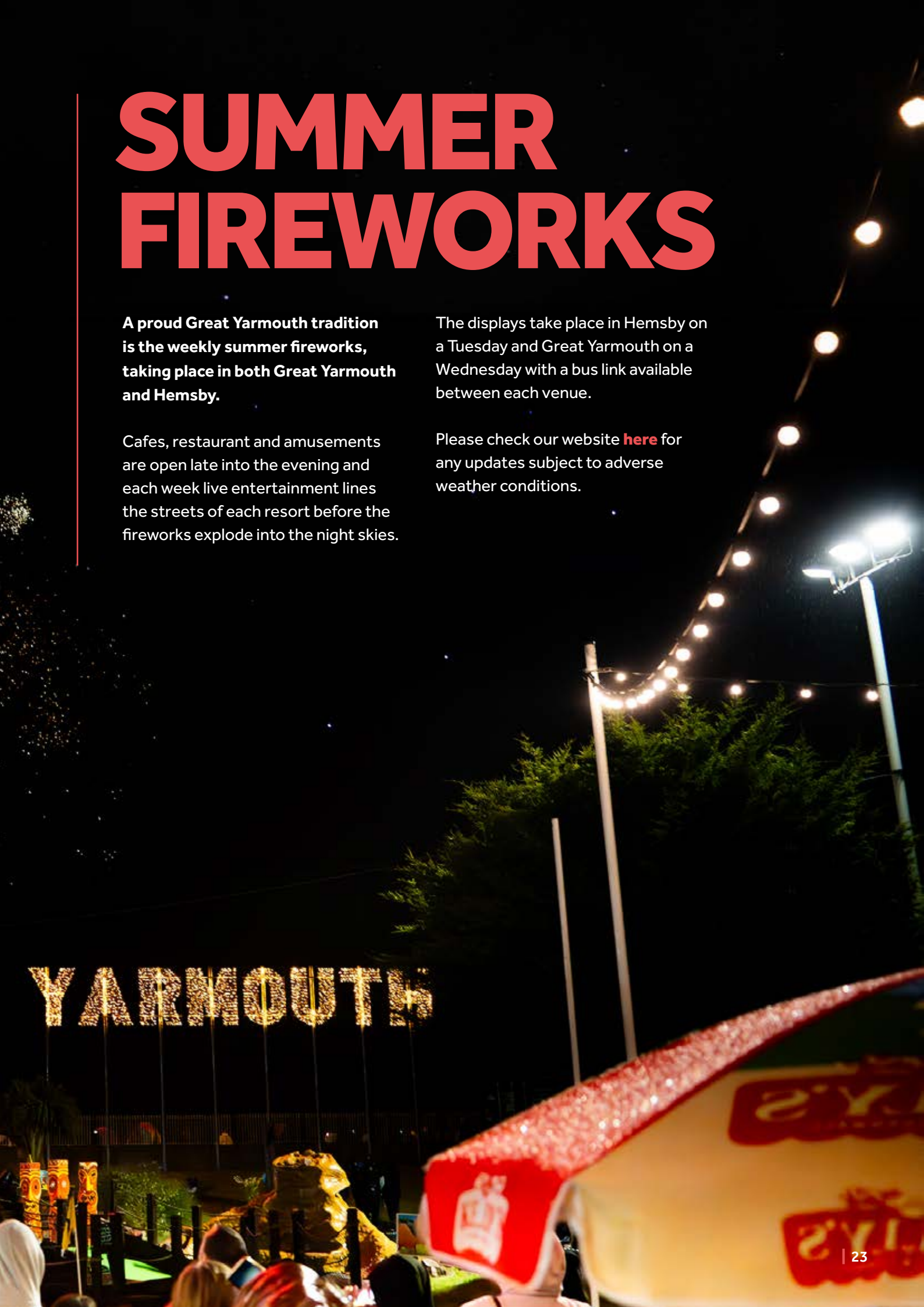
SUMMER FIREWORKS

A proud Great Yarmouth tradition is the weekly summer fireworks, taking place in both Great Yarmouth and Hemsby.

Cafes, restaurant and amusements are open late into the evening and each week live entertainment lines the streets of each resort before the fireworks explode into the night skies.

The displays take place in Hemsby on a Tuesday and Great Yarmouth on a Wednesday with a bus link available between each venue.

Please check our website [here](#) for any updates subject to adverse weather conditions.



BROADS & COUNTRYSIDE

If you're looking for a more tranquil holiday away from the bright lights and lively areas head to the Norfolk Broads.

The beautiful waterways always tempt visitors aplenty who enjoy navigating the rivers in sailing and motor cruisers, many passing through Great Yarmouth to the southern rivers.

From the north, boats are able to cruise along reed-lined rivers Thurne and Bure, past Martham, Thurne, Acle and Stokesby through breath-taking countryside views, with historic windmills dotted on the horizon.

If you just want a taster of the water you can hire a day boat or if you've chosen to spent a week on the Broads there are plenty of mooring spots along the water which are close to watering holes and tearooms.

Take a riverside walk and spot the wildlife and nature along the way in the natural habitats of reserves.

You can also hire canoes, kayaks and stand-up paddle boards if you want to experience a different view, or perhaps if you prefer land to water hire a bicycle or tandem to ride along the many miles of cycle path routes.



From the south, visitors can sail past St Olaves and Fritton and across to Burgh Castle at the conflux of the River Yare and the River Waveney and along to Breydon Water where the sunsets are stunning.

You can hire a day boat at St Olaves near the bridge and meander along to the Berney Arms Windmill which is only accessible by foot, train or boat.

The pretty villages of Filby, Rollesby and Ormesby surround the famous Trinity Broads, five standalone, but interlinked Broads, which are a haven for wildlife and birdlife.

There are plenty of longer walks taking in the villages and beautiful Broads views all over the area.



CULTURAL & HERITAGE GREAT YARMOUTH

Great Yarmouth's history is fascinating with incredible architecture. Medieval town walls (the second best preserved medieval town wall in England), **a Scheduled Ancient Monument - with its origins traced back to 1261 and fishing industry and events, which put the town at the heart of international trading through its port.**

There are plenty of fully immersing guided heritage walks where you can explore the history of this ancient seaside resort, fishing port and market town.

Delve into Great Yarmouth's sea heritage by visiting the Time and Tide Museum of Great Yarmouth Life.

Find out about the herring industry in a converted Victorian herring curing works and wander through a Victorian 'Row' and see inside a fisherman's home.

Transport yourself back to a 1950s quayside, steer a coastal Drifter and hear fascinating tales of wreck and rescue on the high seas.

There are regular exhibitions but you can also enjoy interactive activities, puzzles, film shows, free audio guides and a multitude of children's activities during the holiday seasons.





The National Trust's Elizabethan House Museum on South Quay is a must visit. Moored on the South Quay is one of Britain's most significant historic vessels, the 92-year-old Lydia Eva, the last surviving steam drifter of the herring fishing fleet based in Great Yarmouth.

Listed as part of the National Historic Fleet, in 2022 the Lydia Eva played a major role in the prequel film to Charlie and the Chocolate Factory. She is open to visitors at weekends between March and October.

Great Yarmouth's Medieval town wall, believed to be the second most complete medieval wall in the country, is just more than a mile long with 11 surviving towers.

Work started on the wall in 1276 and took more than a century to complete. It was more than 23 feet high and 2,280 yards long, with 10 gates and 16 towers.

Explore Great Yarmouth's historic Rows, the series of narrow condensed streets in Great Yarmouth that ran from east to west - the direction of the coastline and towards the river at South Quay and housed families in cramped dwellings. It is commonly stated that there were 145 Rows with the first mention as early as 1198.

A Roman fort at Burgh Castle is one of the best preserved Roman monuments in Britain. Built in the late 3rd century as part of the Roman network of coastal defences, three stone walls survive, almost to their original height.



EATING OUT

Eating out in the area is full of variety and you're literally spoilt for choice.

There's a diverse range of restaurants, cafes, pubs and takeaways to cater for all tastes, budgets and occasions.

Customer service is a priority and it's gold standard, whether you go for an all-day breakfast, lunch, traditional afternoon tea, Sunday roast or the best fish and chips.

If you're celebrating a special occasion, we have some outstanding restaurants in Great Yarmouth serving a wide range of cuisines from local seafood to modern contemporary British meals, whether it is a romantic meal for two, a birthday celebration or anniversary dinner.





TOWN CENTRE & SHOPPING

Great Yarmouth is a traditional market town with a permanent market in the town that received a 4.7m investment.

The large marketplace has created a new covered market to house 26 main stalls of different sizes, as well as two kiosks and spaces for pop-up traders, with extra stalls on market day on Wednesdays and Saturdays.

The famous pedestrianised shopping experience in Regent Road is just off the seafront and an enticing area for anyone looking for gifts and novelty finds.

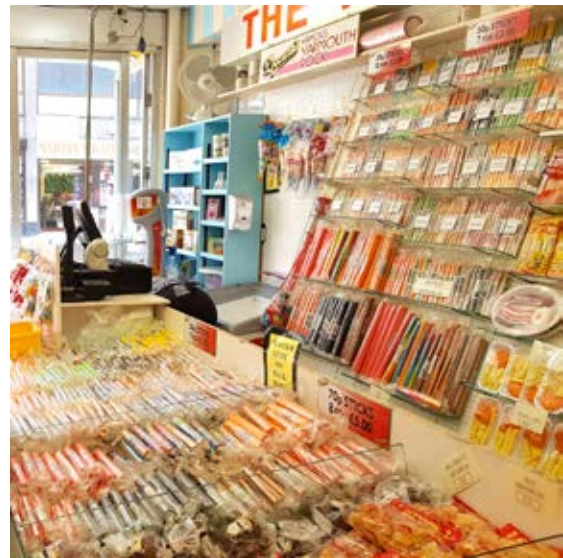
There's a huge range of shops with gifts and souvenirs to clothes and other merchandise.

It's also home to Docwra's Rock Factory and a selection of cafes and restaurant.

Gorleston-on-Sea is nearby and has a bustling and busy high street with lots of independent retailers, just a short walk from the beach.

Between Gorleston and Great Yarmouth you will find larger stores and supermarkets and a retail park at Gapton Hall, which boasts TK Maxx, Boots, M&S Food Hall and café and Next.





There are more shops in the villages of Caister-On-Sea and Hemsby, which are just stone's throw from the holiday parks and if you're looking for fresh and homegrown produce there are plenty of greengrocers, butchers and fishmongers dotted around the borough.

Several supermarkets such as Asda and Tesco are also within easy reach.





ATTRACTIONS

Britannia Pier

Marine Parade, Great Yarmouth,
Norfolk, NR30 2EH

t: 01493 842914

w: www.britannia-pier.co.uk

Bubbles Amusements

1 Warren Rd, Hopton,
Great Yarmouth, Norfolk NR31 9BN

Facebook: <https://www.facebook.com/bubblesamusements>

Caesars Palace Amusements

33 Marine Parade, Great Yarmouth
NR30 2EN

Facebook: <https://www.facebook.com/profile.php?id=100042098473688>

Elizabethan House Museum

South Quay, Great Yarmouth, Norfolk,
NR30 2QH

t: 01493 855746

w: www.museums.norfolk.gov.uk

Great Yarmouth Pleasure Beach

S Beach Parade, Great Yarmouth,
Norfolk, NR30 3EH

t: 01493 844585

w: www.pleasure-beach.co.uk

Great Yarmouth Racecourse

Jellicoe Road, Great Yarmouth, Norfolk,
NR30 4AU

t: 01493 842527

w: www.greatyarmouth-racecourse.co.uk

Hippodrome Circus

St. Georges Road, Great Yarmouth,
Norfolk, NR30 2EU

t: 01493 738877

w: www.hippodromecircus.com

Joyland Funpark

Marine Parade, Great Yarmouth,
Norfolk, NR30 2DL

t: 01493 844094

w: www.joyland.org.uk

Leisureland Amusement Arcade

42-44 Marine Parade,
Great Yarmouth, NR30 2EJ

Facebook:

www.facebook.com/LeisurelandGY

Lost World Adventure Golf

Beach Rd, Hemsby, Great Yarmouth,
Norfolk, NR29 4HS

t: 01493 731500

w: www.lostworldgolf.co.uk



Merrivale Model Village

Marine Parade, Great Yarmouth
NR30 3JG

t: 01493 842097

w: www.merrivalemodelvillage.co.uk

Pavilion Theatre & Bandstand

Pier Gardens, Gorleston, Norfolk,
NR31 6PP

t: 01493 662832

w: www.pavtheatre.com

Redwings Horse Sanctuary

Caldecott Hall, Beccles Rd, Fritton,
NR31 9EY

t: 01508 505246

w: www.redwings.org.uk/visiting

Richardson's Family Entertainment Centre

Beach Rd, Hemsby, Great Yarmouth
NR29 4HR

t: 01502 519 200

w: richardsonsfamilybowl.co.uk

Sealife Great Yarmouth

Marine Parade, Great Yarmouth,
Norfolk, NR30 3AH

t: 01493 330631

w: www.visitsealife.com/great-yarmouth/

The Arc Cinema

Marine Parade, Great Yarmouth,
Norfolk, NR30 2DL

t: 01493 923145

w: www.arccinema.co.uk

The Empire

43 Marine Parade, Great Yarmouth,
Norfolk, NR30 2HF

t: 01493 738877

w: www.theempiregy.com

The Tolhouse Gaol

Tolhouse Street, Great Yarmouth,
Norfolk, NR30 2SH

t: 01493 858900

w: www.museums.norfolk.gov.uk

The Wellington Pier

Wellington Pier, Marine Parade, Great
Yarmouth, Norfolk, NR30 3JF

t: 01493 845947

w: www.wellingtonbowl.co.uk

Thrigby Hall Wildlife Gardens

Filby Road, Thrigby, Great Yarmouth,
Norfolk, NR29 3DR

t: 01493 369477

w: www.thrigbyhall.com

Time and Tide Museum of Great Yarmouth Life

Blackfriars' Road, Great Yarmouth,
Norfolk, NR30 3BX

t: 01493 743930

w: www.museums.norfolk.gov.uk

Yarmouth Stadium

Yarmouth Road, Caister-on-Sea
Great Yarmouth, Norfolk, NR30 5TE

t: 01493 720343

w: www.yarmouthstadium.co.uk

Yarmouth Stadium

Caister on Sea | Tel: 01493 720343

GREYHOUND RACING



BANGER OR STOCK CAR RACING



Check website for race times & dates
www.yarmouthstadium.co.uk



SEA★LIFE

Great Yarmouth

Yikes!

Brave the
Rainforest Adventure

**Exclusive
discount**

[Book
online](#)

THRIGBY WILDLIFE GARDENS



**OPEN ALL YEAR
ROUND**



**Visit our
Website**
to Pre-Book
your tickets
www.thrighbyhall.com

THRIGBY HALL FILBY GREAT YARMOUTH
NR29 3DR

☎ **01493 369477**
www.thrighbyhall.com



*The place
to visit*

SEA HISTORY DIFFERENTLY

Discover Great Yarmouth's seaside and maritime history in this restored Victorian herring works.

"Absolutely delightful" "Something for all ages"

 tripadvisor®

Open daily, 10am - 4.30pm

(Winter opening hours vary, check the website for details)

Blackfriars Road, Great Yarmouth, NR30 3BX

01493 743930

www.museums.norfolk.gov.uk



A WORLD OF ENTERTAINMENT

GREAT RIDES



AMAZING FOOD & DRINK



BRITANNIA PIER THEATRE



LIVE ENTERTAINMENT

LOTS OF NEW RIDES & ATTRACTIONS ADDED FOR 2024!



FAMILY AMUSEMENTS

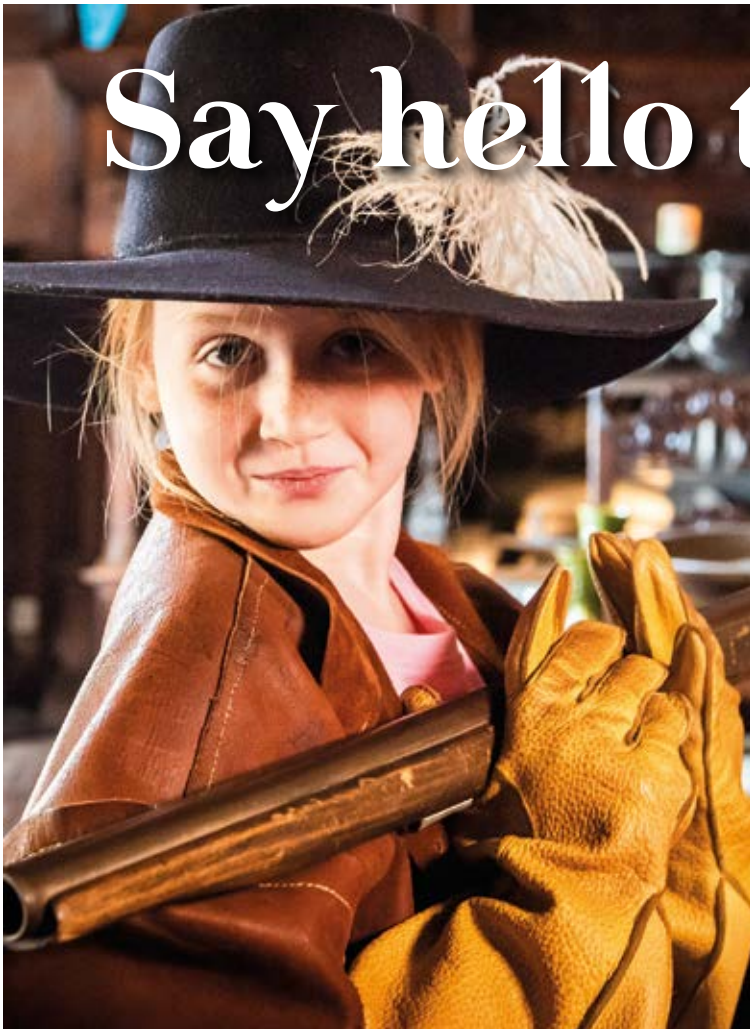


THE FUN STARTS HERE!!!

AND MUCH MORE!!!

VISIT OUR WEBSITE TO VIEW AND BOOK ALL OUR 2024 SESSION SHOWS AND EVENTS! - BRITANNIA-PIER.CO.UK 01493 842914

Say hello to history



Elizabethan

HOUSE MUSEUM

Visit a 16th-century quayside home, set out to reflect domestic life from Tudor to Victorian times.

Open April – October
Sunday to Friday 10am – 4pm

South Quay, Great Yarmouth, NR30 2QH
01493 855746

www.museums.norfolk.gov.uk



GREAT YARMOUTH RACECOURSE

Great Yarmouth Racecourse is a family friendly racecourse offering 23 race dates from April until October, including the glamorous Ladies Night in July, the exciting Sunday Family Fun Day in August and the prestigious Eastern Festival over 3 days in September.

It's proximity to the Newmarket training yards means its well supported by top trainers and jockey's who enjoy racing over the well-drained turf including a flat 1 mile straight helping to deliver exciting and competitive racing.

It is also excellent value with accompanied under 18s free of charge and all advance purchases benefit from a discount up to £5 per person.

Great Yarmouth Racecourse, Jellicoe Road,
Great Yarmouth, Norfolk, NR30 4AU

info@greatyarmouth-racecourse.co.uk
www.greatyarmouth-racecourse.co.uk
01493 842527



PAVILION THEATRE & BANDSTAND

    @gorlestonpav

BOX OFFICE: (01493) 662832

BOOK ONLINE: pavtheatre.com

Pier Gardens, Gorleston, Norfolk NR31 6PP



A WORLD OF PURE IMAGINATION @gypbeach
IMAGINATION 🎵 📷 f 🐦

now with more magic!

Pleasure Beach

MARCH-OCTOBER
see website for opening times!

PLEASURE-BEACH.CO.UK

SCAN & SAVE
online booking discount

ROLLER COASTER
 GT. YARMOUTH
 SKY DROP

LEO

QR code on smartphone

The Tolhouse Gaol

Discover the fate of the unfortunate prisoners incarcerated in one of Britain's oldest gaols.

Open during school holidays
 from April – October
 Sunday to Friday 10am – 4pm

Tolhouse Street,
 Great Yarmouth, NR30 2SH
 01493 858900
www.museums.norfolk.gov.uk

Norfolk Museums
 ARTS COUNCIL ENGLAND
 Funded by UK Government
 Made possible with Heritage Fund
 Norfolk County Council

**WELCOME TO
THE ARC CINEMA
GREAT YARMOUTH
FOR THE LOVE OF FILM**

**THE ARC
CINEMA**

FREE PARKING
LUXURY SEATING
A WARM WELCOME

GIANT SCREEN
7.1 DOLBY
DIGITAL SURROUND
SOUND

THE LATEST
BLOCKBUSTERS
ON THE BIGGEST
SCREEN

THE ROYALTY, MARINE PARADE

SEARCH **ARC CINEMA, GREAT YARMOUTH**

THE EAST COASTS MOST EPIC LIVE EVENTS VENUE

**THE
EMPIRE**

LIVE MUSIC STREET FOOD CRAFT BEER

**AMAZING
STREET FOOD**
FLAVOURS THAT ARE SERIOUSLY BOLD!

**CRAFT BEER
COCKTAILS**

**LIVE MUSIC
EVERY FRIDAY AND SATURDAY**
AND NIGHTLY THROUGHOUT SUMMER HOLIDAYS

FREE ADMISSION

SCAN QR CODE FOR WHATS ON
f @THEEMPIREGY
THEEMPIREGY.COM

EST. 1903

**HIPPODROME
GREAT YARMOUTH**

BEN
LANGLEY

JACK
JAY

**CHRISTMAS
CIRCUS & WATER
SPECTACULAR**

BEGINS
DEC
9TH

PUT SOME **WOW**
INTO YOUR CHRISTMAS
FOR MORE INFORMATION SCAN QR CODE:

BOOK ONLINE OR CALL 01493 738877
HIPPODROMECIRCUS.CO.UK

ENDS
JAN
7TH



LOST WORLD ADVENTURE GOLF

Lost World Adventure Golf is a stunning 9 hole course suitable for any age group. Putt around and through dinosaurs, water hazards, temple ruins and even a smoking volcano. Then after your game, try your hand at our gold panning feature to win a souvenir. Minigolf £5 per person. Gold panning £3 per person. Madisons Coffee & Donuts next door to course, and ample parking directly opposite. Google or call for opening times.

Beach Rd, Hemsby, Great Yarmouth, NR29 4HS

lostworldhemsby@yahoo.co.uk
www.lostworldgolf.co.uk

01493 731500

The Wellington Pier

TENPIN BOWLING CENTRE

- 10 Full Sized Bowling Lanes
- American Pool • Games Area
- Ocean View Bar, Terrace & Diner

www.wellingtonbowl.co.uk

Wellington Pier,
Gt. Yarmouth Seafront

01493 845947

Wellington Pier,
Marine Parade,
Great Yarmouth,
Norfolk,
NR30 3JF



BUBBLES AMUSEMENTS - HOPTON

Incredible selection of machines - including our superb 2p pushers, and all the latest prizes!! Complimentary drinks, fun-family friendly environment. Coin operated bike track, Dogs welcome. Open all year round- please check our Facebook page for current hours.

1 Warren Rd, Hopton,
Great Yarmouth, Norfolk NR31 9BN

Facebook :
<https://www.facebook.com/bubblesamusements>



CAESARS PALACE AMUSEMENTS

Caesar's Palace on The Golden Mile - Incredible selection of machines - including our superb 2p pushers, and all the latest prizes!! Complimentary drinks, fun-family friendly environment. Dogs welcome. Open all year round- please check our Facebook page for current hours.

33 Marine Parade, Great Yarmouth
NR30 2EN

Facebook:
<https://www.facebook.com/profile.php?id=100042098473688>



ESSENTIAL FUN FOR ALL THE YOUNG!!

JOYLAND FUNPARK

SEA HORSES
TWISTY TUBS
THE SNAILS
BALLOON WHEEL

PLUS SKY DIVER JET CARS SPOOK EXPRESS & MORE!!

MARINE PARADE, GREAT YARMOUTH
T: 01493 844094
W: WWW.JOYLAND.ORG.UK

COME AND JOIN THE FUN SPECIAL TOKEN OFFERS AVAILABLE!!

Joyland AMERICAN FAMILY DINER

Open all year!
BREAKFASTS
BEACHSIDE TAKEAWAY & THEMED DINER
BEACH FRONT PATIO AREA
BIRTHDAY PARTIES & SPECIAL EVENTS

RESERVATIONS 01493 854062

Redwings Horse Sanctuary
Caldecott Visitor Centre

A fun family day out!

Follow the brown tourist signs

Dog friendly!

Meet friendly rescued horses and donkeys at Redwings Caldecott, near Great Yarmouth, NR31 9EY

Open every Friday, Saturday, Sunday and Monday 10am to 4pm

For visitor information please visit our website redwings.org.uk 01508 505246

New for 2024 Tenpin Bowling
New for 2024 Coconut Tree Climb
Outdoor High Ropes Experience
Bar & Restaurant
Indoor Play | Air Hockey | Pool & Darts

RICHARDSON'S FAMILY ENTERTAINMENT CENTRE
BOWL • PLAY • DINE
Beach Road, Hemsby

LEISURELAND AMUSEMENT ARCADE

Come on down and join in the fun. Marine Parade's premier amusement arcade, Leisureland is full with all the latest games and prizes. With a warm and friendly atmosphere and lots of fun for the whole family to enjoy .

42-44 Marine Parade,
Great Yarmouth NR30 2EJ

www.facebook.com/LeisurelandGY

MERRIVALE MODEL VILLAGE

Model village, full of fantastic miniature models including a stadium, castle, haunted house, mansion and many more. We have award winning gardens, koi fish and crazy golf included in the price, old penny museum and cafe. New for 2024 will be the only Retro arcade in Yarmouth!

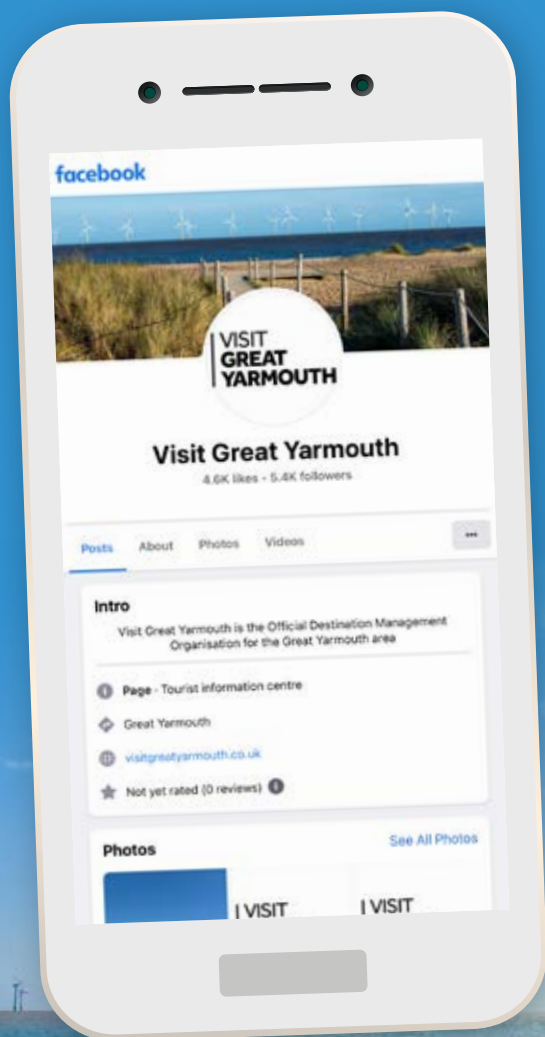
Marine Parade, Great Yarmouth
NR30 3JG



www.merrivalemodelvillage.co.uk

01493 842097

FOLLOW US ON SOCIAL MEDIA



VISIT
GREAT
YARMOUTH



WHERE TO STAY?



Looking for a place to stay?

From holiday parks to traditional seafront B&B's and hotels. You will be spoilt for choice.

Boutique hotels, large hotels and big-name brands, seaview suites with a balcony to rural lodges nestled into stunning woodland, catered to self-catering - you will receive a grand welcome and first-class customer service.

All accommodation providers aim to deliver the best experience possible to meet every visitor need.

If you're bringing a dog, need something disability-friendly, travelling as a large group, a romantic break or on a solo mission – we've got you covered.

And don't forget the great public transport system, the network of e-scooters and the fact you can easily get around by foot.

ACCOMMODATION LISTING

BELTON

Rose Farm Touring Park

Stepshort, Belton, Great Yarmouth,
Norfolk, NR31 9JS

t: 01493 738292

e: office@rosefarmtouringpark.com

w: www.rosefarmtouringpark.co.uk

Haven - Wild Duck Holiday Park

t: 01493 780268

w: www.haven.com/wild-duck

BURGH CASTLE

Breydon Water Holiday Park

Burgh Castle, Norfolk, NR31 9QB

w: www.parkdeanresorts.co.uk

Cherry Tree Holiday Park

Great Yarmouth, Norfolk, NR31 9QR

w: www.parkdeanresorts.co.uk

CAISTER-ON-SEA

Eastern Beach Caravan Park

Manor Road, Caister-on-Sea, Norfolk,
NR30 5HH

t: 01493 720367

e: easternbeach@

thefamilyparksgroup.co.uk

w: thefamilyparksgroup.co.uk/

locations/eastern-beach-holiday-park

Haven - Caister Holiday Park

t: 01493 728931

w: www.haven.com/caister

Sand Dune Cottages

Tan Lane, Caister-On-Sea, Norfolk,
NR30 5DT

t: 01493 717211

e: bookings@sanddunecottages.co.uk

w: www.sanddunecottages.co.uk

CALIFORNIA CLIFFS

California Cliffs Holiday Park

Norfolk, NR29 3QU

w: www.parkdeanresorts.co.uk

CLIPPESBY

Clippesby Hall

Hall Rd, Clippesby, Great Yarmouth,
Norfolk, NR29 3BL

t: 01493 367800

e: holidays@clippesby.com

w: www.clippesbyhall.com

FLEGGBURGH

Broad Farm Holiday Park

Main Road, Fleggburgh,
Great Yarmouth NR29 3AF

t: 01493 369273

e: broadfarmholiay@outlook.com

w: www.broadfarmcaravanpark.co.uk

FRITTON

Decoy Barn

Beccles Road, Fritton, Great Yarmouth,
Norfolk, NR31 9AB

t: 01493 488222

e: decoybarn@yahoo.co.uk

w: www.decoybarn.co.uk

GORLESTON-ON-SEA

Cliff Hotel

Cliff Hill, Gorleston, Great Yarmouth,
Norfolk, NR31 6DH

t: 01493 662179

e: reception@theclyffhotel.co.uk

w: www.theclyffhotel.co.uk

Pier Hotel

Harbour's Mouth, Gorleston-on-Sea,
Norfolk, NR31 6PL

t: 01493 662631

e: bookings@pierhotelgorleston.co.uk

w: www.pierhotelgorleston.co.uk

GREAT YARMOUTH

Andover House Hotel & Restaurant

27-30 Camperdown, Great Yarmouth,
Norfolk, NR30 3JB

t: 01493 843490

e: bookings@andoverhouse.co.uk

w: www.andoverhouse.co.uk

Anglia Guest House

56 Wellesley Road, Great Yarmouth,
Norfolk, NR30 1EX

t: 01493 844395

e: angliahouse@aol.com

w: www.angliahouse.co.uk

Annabelle Rooms

13 Sandown Road, Great Yarmouth,
Norfolk, NR30 1EY

t: 07827 275268 - 01493 842161

e: info@annabellerooms.co.uk

w: www.annabellerooms.co.uk

Barons Court

Barons Court, 5 Norfolk Square, Great
Yarmouth, Norfolk, NR30 1EE

t: 01493 843987

e: edward.shearing@btinternet.com

w: www.baronscourthotel.co.uk

Beaumont House

Beaumont House, 52 Wellesley Road,
Great Yarmouth, Norfolk, NR30 1EX

t: 01493 843957

e: info@beaumonthouse.co.uk

w: www.beaumonthousegy.co.uk

The Chateau

1 North Drive, Great Yarmouth, Norfolk,
NR30 1ED

t: 01493 859052

e: info@chateauyarmouth.co.uk

w: www.chateauyarmouth.co.uk

Cleasewood Guest House

55 Wellesley Road, Great Yarmouth,
Norfolk, NR30 1EX

t: 01493 843960

e: info@thecleasewood.co.uk

w: www.thecleasewood.co.uk

The Courtyard Guest House

23 Trafalgar Road, Great Yarmouth,
Norfolk, NR30 2LD

t: 01493 855469

e: info@thecourtyardguesthouse.co.uk

w: www.thecourtyardguesthouse.co.uk

Dene House

89 North Denes Road,
Great Yarmouth, NR30 4LW
t: 01493 844181
e: denehouse@btinternet.com

Haven - Seashore Holiday Park

t: 01493 851131
w: www.haven.com/seashore

Imperial Hotel

North Drive, Great Yarmouth, Norfolk,
NR30 1EQ
t: 01493 842000
e: reservations@imperialhotel.co.uk
w: www.imperialhotel.co.uk

The Kensington

29 North Drive, Great Yarmouth,
NR30 4EW
t: 01493 844145
e: frontdesk@kensington-hotel.co.uk
w: www.kensington-hotel.co.uk

Kilbrannan Guest House

14 Trafalgar Road, Great Yarmouth,
Norfolk, NR30 2LD
t: 01493 850383
e: enquiries@kilbrannanguesthouse.co.uk
w: www.kilbrannanguesthouse.co.uk

Knights Court Hotel

22 North Drive, Great Yarmouth,
NR30 4EW
t: 01493 843089
e: enquiries@knights-court.co.uk
w: www.knights-court.co.uk

Maluth Lodge Guest Accommodation

40 North Denes Road, Great Yarmouth,
Norfolk, NR30 4LU
t: 07515 705304
e: enquiries@maluthlodge.co.uk
w: www.maluthlodge.co.uk

Marine Lodge

19-20 Euston Road, Great Yarmouth,
Norfolk, NR30 1EB
t: 01493 331120
e: res@marinelodge.co.uk
w: www.marinelodge.co.uk

Maryland Guest House

53 Wellesley Road, Great Yarmouth,
Norfolk, NR30 1EX
t: 01493 844409
e: lucy@themaryland.co.uk
w: www.themarylandguesthouse.co.uk

Nelson Hotel

1 Marine Parade, Great Yarmouth,
Norfolk, NR30 3AG
t: 01493 855551
e: nelsonhotel2022@hotmail.com

Palm Court

North Drive, Great Yarmouth,
Norfolk, NR30 1EG
t: 01493 844568
e: enquiries@palmcourt.co.uk
w: www.palmcourt.co.uk

Premier Inn

Great Yarmouth Seafront
South Beach Parade,
Great Yarmouth, Norfolk NR30 3DD
t: 0330 135 9316
w: www.premierinn.com

Premier Inn

Great Yarmouth West (A47)
North River Road, Runham Vauxhall,
Great Yarmouth NR30 1SH
t: 0333 321 9345
w: www.premierinn.com

Prom Hotel

77 Marine Parade, Great Yarmouth,
Norfolk, NR30 2DH
t: 01493 842308
e: info@promhotel.co.uk
w: www.promhotel.co.uk

The Rampart

2 North Drive, Great Yarmouth,
Norfolk, NR30 1ED
t: 0333 322 4452
e: info@randallaccommodation.co.uk
w: www.randallaccommodation.co.uk

Remaotel The Bromley

The Bromley, 63 Apsley Road, Great
Yarmouth, Norfolk, NR30 2HG
t: 0333 9000 444
e: info.dsa@datragroup.uk
w: www.remaotel.com

Remaotel Seafield Court

Seafield Court, Kings Road, Great
Yarmouth, Norfolk, NR30 3JW
t: 0333 9000 444
e: info.dsa@datragroup.uk
w: www.remaotel.com

Ryecroft Guest House

91 North Denes Road, Great Yarmouth,
Norfolk, NR30 4LW
t: 01493 850665
e: info@ryecroftguesthouse.co.uk
w: www.ryecroftguesthouse.co.uk

Seamore Guest House

116 Wellesley Road, Great Yarmouth,
Norfolk, NR30 2AR
t: 01493 857389
e: info@seamoreguesthouse.co.uk
w: www.seamoreguesthouse.co.uk

St Anne's Hotel

7 Norfolk Square, Great Yarmouth,
Norfolk, NR30 1EE
t: 01493 843795
e: stanneshotel@aol.com
w: www.stanneshotel.com

Sunnydene

83 North Denes Road, Great Yarmouth,
Norfolk, NR30 4LW
t: 01493 843554
e: info@sunnydenehotel.co.uk
w: www.sunnydenehotel.co.uk

Vauxhall Holiday Park

Acle New Road, Great Yarmouth,
Norfolk, NR30 1TB
w: www.parkdeanresorts.co.uk

The Waverley Hotel

32-37 Princes Road, Great Yarmouth,
Norfolk, NR30 2DG
t: 01493 853388
e: thewaverleyhotel.gy@gmail.com
w: thewaverleyhotelgy.com

Wellesley Park Hotel

62 Wellesley Park Road, Great
Yarmouth, Norfolk, NR30 1EX
t: 01493 842116
e: info@wellesleyparkhotel.com
w: www.wellesleyparkhotel.com

The White Lodge

19 Marine Crescent, Great Yarmouth,
Norfolk, NR30 4ET
t: 07919 993865
e: bookings@thewhitelodgenorfolk.com
w: www.thewhitelodgenorfolk.com

Willows Guest House

26 Trafalgar Road, Great Yarmouth,
Norfolk, NR30 2LD
t: 01493 332335 - 07950 904471
e: willowsguesthouse2017@gmail.com
w: www.willowsguesthousegy.co.uk

The Winchester

12 Euston Road, Great Yarmouth,
Norfolk, NR30 1DY
t: 01493 843950 - 07807 733161
e: enquiry@winchesterprivatehotel.com
w: www.winchesterprivatehotel.com

Woods End Guest House

49 Wellesley Road, Great Yarmouth,
Norfolk, NR30 1EX
t: 01493 842229
e: woodsendguesthouse@btconnect.com
w: www.woodsendhotel.co.uk

HEMSBY

Belle Aire Holiday Park

Beach Road, Hemsby, Norfolk,
NR29 4HZ
t: 01493 731164
e: belleaire@thefamilyparksgroup.co.uk
w: thefamilyparksgroup.co.uk/
locations/belle-aire-holiday-park

Cavalier Chalets

Florida Park, Back Market Lane,
Hemsby, NR29 4HW
t: 01493 368188
w: www.cavalier-chalets-hemsby.co.uk

Richardson's

Hemsby Beach Holiday Park

Beach Rd, Hemsby, Great Yarmouth,
NR29 4HR
t: 01493 809903
w: www.richardsonsholidayparks.co.uk

Seadell Holiday Chalets & Seadell Shops

Beach Road, Hemsby, Norfolk, NR29 4HS
t: 01493 730041
e: enquiries@seadell.co.uk
w: www.seadell.co.uk

HOPTON-ON-SEA

Haven - Hopton Holiday Park

t: 01502 730214
w: www.haven.com/hopton

Potters Resorts

Coast Road, Hopton-on-Sea, Great
Yarmouth, Norfolk, NR31 9BX
t: 0333 3207 497
e: info@pottersresorts.com
w: www.pottersresorts.com

MAUTBY

Lower Wood Farm Country Cottages

Grove Farm, Tower Road, Repps with
Bastwick, Gt Yarmouth, Norfolk,
NR29 5JN
t: 07847 330081
e: enquiries@grovefarmholidays.co.uk
w: www.grovefarmholidays.co.uk

SCRATBY

The Anchorage

33 The Esplanade, Scratby, NR29 3NZ
t: 07719 012596
e: michael.debbie@btinternet.com
w: www.anchoragescratby.com

Scratby Hall

Thoroughfare Lane, Scratby,
Gt Yarmouth, Norfolk, NR29 3SR
t: 01493 730283
e: scratbyhall@aol.com
w: www.scratbyhall.co.uk

Summerfields Holiday Park

Scratby, Norfolk, NR29 3NW
w: www.scratbyhall.co.uk

WINTERTON-ON-SEA

Mill Farm Eco Barns

Mill Farm, Hemsby Road, Winterton-on-
Sea, Norfolk, NR29 4AE
t: 07900 376 462
e: emma@millfarm-ecobarns.co.uk
w: www.millfarm-ecobarn.co.uk





★★★★
Scott Hotels
 Family run with
 the friendliest
 of teams.
 ★★★★★

**The Prom Hotel,
 Great Yarmouth, Golden Mile**

AA rated four-star hotel with 50 lovely bedrooms, opposite Britannia Pier. Only a minute's walk from the beach.

- 24-hour room service • Function suite • Games room
- Lift to all main floors • Free wifi • Sea view rooms available
- Large outside terrace seating 60 • Free gym for guests
- Delicious food served all day in the bar or bistro
- Private dining available in Strollers • Popular public bar with fantastic selection of drinks from real ales to cocktails

The Pier Hotel, Gorleston-on-Sea

The Pier Hotel sits beside the entrance to Great Yarmouth's historic port and looks out over one of Norfolk's most magnificent beaches, with a view all the way to Ness Point, Britain's most easterly point.

- 20 en suite bedrooms • Flavoursome food served all day in the bar and outside terrace • Great lunch and dinners served in our restaurant • Popular bar with real ales
- Wine bar • Parking • Free wifi • Lift to most rooms
- Public bar favoured by the locals • Our celebrity hotel featured in Danny Boyles film Yesterday



www.promhotel.co.uk
info@promhotel.co.uk
 01493 842308



www.pierhotelgorleston.co.uk
bookings@pierhotelgorleston.co.uk
 01493 662631

The Haven logo, featuring the word "Haven" in a white, elegant script font with a wavy underline.

Come for a week and stay for a lifetime with

holidays and ownership

on the norfolk coast

haven.com

HVN590031

A photograph of a family playing on a sandy beach. A boy and a girl are jumping over a low sandcastle wall. A man stands in the background. A yellow shovel is stuck in the sand. The sky is blue with light clouds.

Your
**Holiday
Happy**
starts here

 **Parkdean
Resorts**

parkdeanresorts.co.uk

BELTON

ROSE FARM TOURING PARK

★★★★ AA

AA rated 5 pennant touring park set near to Gorleston Beach. We welcome tents, campervans, caravans and motor homes. EHU available. Good rates. Families and pets welcome. Generous pitches. Countryside views.

Stepshort, Belton,
Great Yarmouth, NR31 9JS

office@rosefarmtouringpark.com
www.rosefarmtouringpark.co.uk

From £20.00
01493 738292



BURGH CASTLE

BREYDON WATER

Parkdean Resorts Breydon Water Holiday Park in Norfolk has something for everyone and is just minutes from lively Great Yarmouth. Offering two distinct parks, just a short 10 minute walk apart, Yare Village and Bure Village in one beautiful setting – you'll find plenty to see and do nearby.

Breydon Water Holiday Park,
Burgh Castle, Norfolk, NR31 9QB

parkdeanresorts.co.uk



CHERRY TREE

In a lush green setting, holidays at Parkdean Resorts Cherry Tree Holiday Park in Norfolk can be as active or as relaxed as you choose. Between Great Yarmouth and Gorleston Beach, it's the perfect base for a seaside holiday.

Cherry Tree Holiday Park, Great Yarmouth, Norfolk, NR31 9QR

parkdeanresorts.co.uk



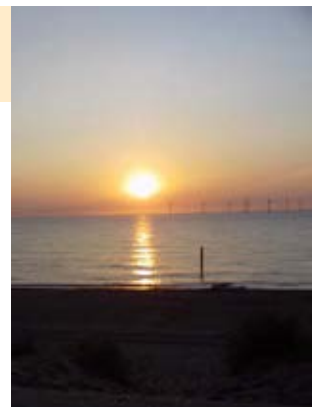
CAISTER-ON-SEA

EASTERN BEACH CARAVAN PARK

Experience tranquility at Eastern Beach Holiday Park, offering scenic sea views, direct beach access in Caister-on-Sea, and affordable holiday homes for rent or purchase. Ideal for exploring Norfolk and the Broads, creating a perfect retreat.

Manor Road, Caister-on-Sea,
NR30 5HH

easternbeach@thefamilyparksgroup.co.uk 01493 720367
thefamilyparksgroup.co.uk/locations/eastern-beach-holiday-park



SAND DUNE COTTAGES

All of our cottages in Caister, near Gt Yarmouth, have superb views over the adjoining golf course and sand dunes. Great value accommodation for your summer holiday or short break.

Tan Lane, Caister-On-Sea,
NR30 5DT

bookings@sanddunecottages.co.uk From £165 per cottage per week
www.sanddunecottages.co.uk 01493 717211



CALIFORNIA CLIFFS

CALIFORNIA CLIFFS

You're guaranteed to have a bucket load of fun at Parkdean Resorts California Cliffs Holiday Park – from classic seaside amusements at Great Yarmouth to the beauty of the Norfolk Broads, there's something for everyone to enjoy.

California Cliffs Holiday Park,
Norfolk, NR29 3QU



parkdeanresorts.co.uk



CLIPPESBY

Camping, Touring & Holiday Accommodation
Visitors Welcome to BASECAMP, our Café, Bar and Restaurant



OPEN ALL YEAR

WWW.CLIPPESBYHALL.COM

01493 367800 NR29 3BL  



FLEGGBURGH

BROAD FARM HOLIDAY PARK

Set in the beautiful Norfolk countryside, covering 26 acres. With plenty of on-site facilities including a large Clubhouse and outdoor swimming pool. We offer serviced and seasonal pitches for touring and static caravans and a secluded field for camping.

Main Road, Fleggburgh,
Great Yarmouth NR29 3AF

www.broadfarmcaravanpark.co.uk
Booking by phone only 01493 369273



FRITTON

DECOY BARN

★★★★ Gold

A four star gold converted barn and stables overlooking our gardens and the Norfolk Countryside.

Decoy Barn, Beccles Road, Fritton,
Great Yarmouth, NR31 9AB

decoybarn@yahoo.co.uk
www.decoybarn.co.uk



From £36.00
01493 488222

GORLESTON -ON-SEA

CLIFF HOTEL

Overlooking the award-winning Gorleston beach is The Cliff Hotel, a unique hotel in a picturesque setting, offering a luxurious experience all year round. Our Terrace makes for a wonderful vantage point to enjoy the exquisite views of the surrounding area.

Cliff Hill, Gorleston,
Great Yarmouth, NR31 6DH

reception@thecliffhotel.co.uk
www.thecliffhotel.co.uk

From £95.00
01493 662179



THE PIER HOTEL

Hotel with a view, overlooking the harbours mouth and Gorleston's wide, sandy golden beach. Serving up delicious delicacies and a variety of your favourite tipples to the locals and visitors alike. Where everyone's greeted with a warm welcome.

Harbour's Mouth, Gorleston-on-Sea
Norfolk NR31 6PL

bookings@pierhotelgorleston.co.uk
www.pierhotelgorleston.co.uk

01493 662631



GREAT YARMOUTH

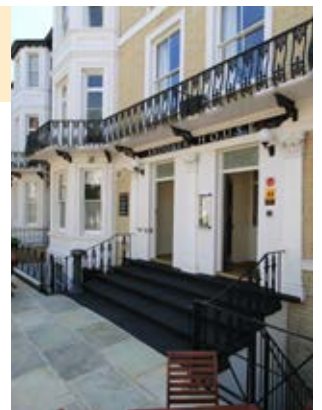
ANDOVER HOUSE HOTEL & RESTAURANT ★★★

Beautifully presented adults only hotel, situated on a tree lined avenue close to the seafront. Stay in a Superior, Double with Lounge or Standard room with a delicious breakfast included. Why not try our popular restaurant for dinner.

27-30 Camperdown,
Great Yarmouth, NR30 3JB

bookings@andoverhouse.co.uk
www.andoverhouse.co.uk

From £72.00
01493 843490





BARONS COURT

★★★★ Silver

Barons court is situated just a short walk off the seafront. A three minute walk, and you are on the beach. We are a family run guest accommodation. There are private lawns to the rear of the property for guests. We have free on site parking, and there is free street parking opposite. Breakfast is included with all prices. We cater for gluten free and vegetarian. Wifi is free, all rooms are ensuite.

**Barons Court, 5 Norfolk Square,
Great Yarmouth, NR30 1EE**

edward.shearing@btinternet.com www.baronscourthotel.co.uk **From £47.50**
01493 843987



IMPERIAL HOTEL

★★★★

Located at the relaxed end of Great Yarmouth seafront, with outstanding views over the beach and Venetian Waterways, the 4-star Imperial Hotel is perfectly placed for pleasure or business stays. With a famously warm welcome and exceptional customer service, the hotel offers 39 well designed and comfortable bedrooms. Fabulous food is served at the hotel's two restaurants, The Terrace and Café Cru (with 2 AA Rosettes). Well behaved dogs are welcome in dog friendly rooms.

North Drive, Great Yarmouth, Norfolk, NR30 1EQ

reservations@imperialhotel.co.uk www.imperialhotel.co.uk **01493 842000**



MARINE LODGE

★★★★ AA Gold Award

Marine Lodge enjoys one of the Premier locations on the seafront, with superb sea views from many of our rooms.

We offer excellent accommodation for your Great Yarmouth holiday in our bright, modern rooms and relaxing public areas including a large balcony seating area.

**19-20 Euston Road, Great Yarmouth
Norfolk, NR30 1EB**

res@marinelodge.co.uk www.marinelodge.co.uk **From £65**
01493 331120



NELSON HOTEL

★★★ AA

On the seafront, this stately hotel is next to the Carlton Hotel alongside Grosvenor Casino, the Pleasure Beach & the Sea Life aquarium.

The hotel has large rooms overlooking the sea.

**1 Marine Parade,
Great Yarmouth, NR30 3AG**

nelsonhotel2022@hotmail.com **From £35.00**
01493 855551



THE WAVERLEY HOTEL

★★★ AA

The Waverley Hotel is one of the most visited hotels in Great Yarmouth as it is located near the Sea Front and very close to the (walk-only) shopping street - Regent Road.

The hotel is very close to Britannia Pier, Pub on the Prom & the Arc Cinema.

**32-37 Princes Road,
Great Yarmouth, NR30 2DG**

thewaverleyhotel.gy@gmail.com
thewaverleyhotelgy.com

From £35.00
01493 853388



THE WINCHESTER

The Winchester in Great Yarmouth is ideally located for a long or short stay.

Close to the famous Regent Road and just 200 metres from the sea front.

Breakfast is served to your own table and evening dinners are available at certain times of the year. We offer a space in our own private car park.

**12 Euston Road,
Great Yarmouth, NR30 1DY**

enquiry@winchesterprivatehotel.com
www.winchesterprivatehotel.com

From £70.00
01493 843950 or
07807 733161

ANGLIA GUEST HOUSE

A warm welcome awaits you at Anglia House which has 7 en-suite rooms, a licensed bar and free wi-fi, and it's close to all amenities, seafront and town centre.

Please call or email for more information.

**56 Wellesley Road,
Great Yarmouth, NR30 1EX**

angliahouse@aol.com
www.angliahouse.co.uk



From £30.00
01493 844395

ANNABELLE ROOMS

★★★ Booking.com

Annabelle Rooms is a fully serviced room only accommodation in a stunning Victorian property 2 minutes from the beach in the peaceful venetian waterways area of Great Yarmouth. All rooms are ensuite with a hospitality tray, mini fridge and smart TV.

**13 Sandown Road,
Great Yarmouth, NR30 1EY**

info@annabellerrooms.co.uk
www.annabellerrooms.co.uk



From £55.00
07827 275268/01493 842161

BEAUMONT HOUSE

★★★★ Visit England, Silver Award, Breakfast Award

Just a 5-minute walk from Great Yarmouth's seafront and town centre, this fine Victorian guest house is exclusively for adults, and offers free Wi-Fi, award winning breakfasts, free on-street parking and elegant rooms.

**Beaumont House, 52 Wellesley Rd
Great Yarmouth, NR30 1EX**

info@beaumonthouse.co.uk
www.beaumonthousegy.co.uk



From £45.00 p.p.
01493 843957

THE CHATEAU

The Chateau is open for quality, clean en-suite bed and breakfast accommodation. This friendly, family run establishment is situated in a superb position on the seafront, with free parking on-site. Why not wake up and see the sea?

**1 North Drive,
Great Yarmouth, NR30 1ED**

info@chateauyarmouth.co.uk
www.chateauyarmouth.co.uk



From £78.00
01493 859052

CLEASEWOOD GUEST HOUSE

Friendly, family run guest house close to the sea and all amenities. All rooms en-suite and full English breakfast included.

55 Wellesley Road,
Great Yarmouth, NR30 1EX



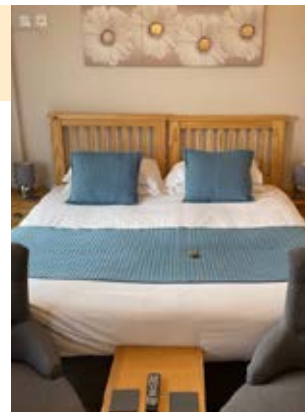
info@thecleasewood.co.uk
www.thecleasewood.co.uk

From £55.00
01493 843960

THE COURTYARD GUEST HOUSE

Quality Accommodation in the heart of Great Yarmouth. Most rooms are En suite and have a sea view. A complimentary full cooked breakfast and parking is included. We are open all year round.

23 Trafalgar Road, Great Yarmouth
Norfolk NR30 2LD



info@thecourtyardguesthouse.co.uk
www.thecourtyardguesthouse.co.uk

From £70 per night
01493 855469

DENE HOUSE

Dene House is situated 1.6 km from Britannia Pier. During your time staying in this sustainable bed and breakfast, you will have access to free wifi, a TV and towels. All rooms have a kettle, fan, coffee machine, hairdryer and heater.

89 North Denes Road,
Great Yarmouth, NR30 4LW



denehouse@btinternet.com

From £40
01493 844181

THE KENSINGTON

The Kensington is a guest accommodation situated on the most picturesque part of Great Yarmouth seafront opposite the beach and Victorian waterways. A beautiful, peaceful location yet only a short walk to all the excitement of the Golden Mile.

29 North Drive, Great Yarmouth,
NR30 4EW



frontdesk@kensington-hotel.co.uk
www.kensington-hotel.co.uk

From £40
01493 844145

KILBRANNAN GUEST HOUSE

B&B in the heart of Great Yarmouth. Walking distance to all amenities. Great rooms, all ensuite, spotlessly clean, outstanding Customer Service & superb breakfasts included. Book through our website for best prices. Hope to see you soon.

14 Trafalgar Road,
Great Yarmouth, NR30 2LD



enquiries@kilbrannanguesthouse.co.uk
www.kilbrannanguesthouse.co.uk

From £70.00
01493 850383

KNIGHTS COURT HOTEL

The Knights Court Hotel boasts 20 individually decorated en-suite rooms, including ground floor rooms, and several enjoying a sea-view. With a unique atmosphere throughout the hotel, we offer an experience unlike standard chain hotels.

22 North Drive, Great Yarmouth,
NR30 4EW



enquiries@knights-court.co.uk
www.knights-court.co.uk

01493 843089

MALUTH LODGE GUEST ACCOMMODATION

Small family run Guest accommodation situated at the North end of Great Yarmouth just 5 mins walk from north beach. Fully ensuite, serviced rooms and breakfast included. Very friendly, clean and comfortable accommodation.

40 North Denes Road,
Great Yarmouth, NR30 4LU



enquiries@maluthlodge.co.uk
www.maluthlodge.co.uk

From £50 p.p.n. Min 2 nights
07515 705304

MARYLAND GUEST HOUSE

★★★ Visit England

ENCLOSED PRIVATE CARPARK. Delightfully situated quiet location, overlooking Wellesley Park and sea, close to all amenities and town. All bedrooms en-suite, freeview TV, drink making facilities and wifi. Special diets, healthy options catered for. 5 star food hygiene award.

53 Wellesley Road,
Great Yarmouth, Norfolk, NR30 1EX



lucy@themaryland.co.uk
www.themarylandguesthouse.co.uk

From £60.00 double
01493 844409

PALM COURT HOTEL

Seafront location. Heated indoor swimming pool. Variety of accommodation. Restaurant and bar open all day. Free off road parking. Games room. Sun Terrace. Free Wifi. Lifts to all floors. Book direct for best prices.

North Drive, Great Yarmouth, Norfolk, NR30 1EG



enquiries@palmcourt.co.uk
www.palmcourt.co.uk

From £89.00 double room
01493 844568

PREMIER INN GT YARMOUTH SEAFRONT

Thanks to its location on Great Yarmouth Beach, our Premier Inn Great Yarmouth (Seafront) hotel is ideal for your next family holiday. Breakfast or meals can be enjoyed at our onsite Beefeater restaurant before relaxing on a super-comfy bed.

South Beach Parade,
Great Yarmouth, Norfolk NR30 3DD



www.premierinn.com

From £39
0330 135 9316

PREMIER INN GT YARMOUTH WEST (A47)

Our stylish Premier Inn Great Yarmouth West (A47) hotel, just a 10-minute walk from Great Yarmouth train station. Enjoy breakfast and tasty family meals back at our Brewers Fayre restaurant.

North River Road, Runham Vauxhall,
Great Yarmouth NR30 1SH



www.premierinn.com

From £39
0333 321 9345

THE PROM HOTEL

★★★★ AA

One of only two 4 star hotels in Great Yarmouth sitting opposite the Britannia Pier on the Golden mile boasting 50 comfortable rooms, gym, restaurants and the locals favourite watering hole, the Mermaid public bar serving your favourite tipple & food.

77 Marine Parade, Great Yarmouth
Norfolk NR30 2DH



info@promhotel.co.uk
www.promhotel.co.uk

01493 842308

THE RAMPART

★★★★

Perfect for guests that are looking for quality and modern self-catering accommodation with a brilliant sea front location. The suites benefit from fully equipped kitchens, dining and sitting spaces, laundry room access, car parking, air conditioning, free Netflix and Wi Fi to name but a few.

2 North Drive, Great Yarmouth,
Norfolk, NR30 1ED



info@randallaccommodation.co.uk
www.randallaccommodation.co.uk

From £100
0333 322 4452

REMAOTEL THE BROMLEY

The Bromley consists of 9 apartments, which completed a full renovation in 2018. Each apartment has been tastefully designed and furnished to a very high standard, with a modern touch. Located at the seafront and 5 minutes from the town centre.

The Bromley, 63 Apsley Road,
Great Yarmouth, NR30 2HG



info.dsa@datragroup.uk
www.remaotel.com

Apartments From £75.00
0333 9000 444

REMAOTEL SEAFIELD COURT

Seafield Court is a magnificent detached historical building that sits in half an acre of private land right by the seafront. Undergoing complete refurbishment in 2021/2022, each apartment is beautifully decorated and furnished with a modern appeal.

Seafield Court, Kings Road,
Great Yarmouth, NR30 3JW



info.dsa@datragroup.uk
www.remaotel.com

Apartments From £85.00
0333 9000 444

RYECROFT GUEST HOUSE (PET FRIENDLY)

Pet Friendly Guest House. Three double rooms and one family room. All En-suite. All rooms cleaned with Covid safe products. Guest Lounge with Dart board and board games. Full/Vegetarian/Vegan/Gluten Free and other food allergies catered for.

91 North Denes Road,
Great Yarmouth, NR30 4LW.



info@ryecroftguesthouse.co.uk
www.ryecroftguesthouse.co.uk

From £65.00
01493 850665

SEAMORE GUEST HOUSE

Family run guest house close to beach and town centre. All rooms en-suite. Family, double, twin and single rooms available. Breakfast or room only option, stay for a night, or stay for a week. Committed to renewable energy, solar powered from 2023.

116 Wellesley Road,
Great Yarmouth, NR30 2AR



info@seamoreguesthouse.co.uk
www.seamoreguesthouse.co.uk

From £39.00
01493 857389

ST ANNE'S HOTEL

Pet friendly B&B, 13 spacious rooms all en-suite. There are four family rooms that can accommodate 3-4 people, 7 double rooms and a single room. All rooms have tea and coffee making facilities. TV with Freeview and free internet access.

7 Norfolk Square,
Great Yarmouth, NR30 1EE



stanneshotel@aol.com
www.stanneshotel.com

From £35.00 per single
01493 843795

SUNNYDENE

Welcome to Sunnydene! A family run guest house located close to the seafront where you will be sure of a warm welcome from your new hosts Natalie and Nick. We offer bed and breakfast accommodation from as little as 2 nights. Every room en-suite and newly refurbished.

83 North Denes Road,
Great Yarmouth, NR30 4LW



info@sunnydenehotel.co.uk
www.sunnydenehotel.co.uk

01493 843554

VAUXHALL

With so many things to enjoy at Parkdean Resorts Vauxhall Holiday Park, the only problem is deciding what to do first! Book Now!

Vauxhall Holiday Park,
Acle New Road, Great Yarmouth,
Norfolk, NR30 1TB



parkdeanresorts.co.uk

WELLESLEY PARK HOTEL

★★★ Self rated

A family run Hotel with 20 en suite rooms, tea making facilities, free Wi-Fi and dog friendly, 300 meters from the beach and Venetian waterways in a quiet part of Great Yarmouth ideal for dog walking. Free on road Parking.

62 Wellesley Park Road,
Great Yarmouth, Norfolk, NR30 1EX



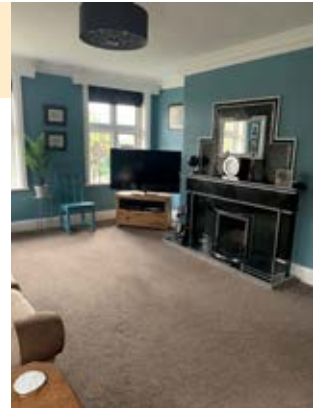
info@wellesleyparkhotel.com
www.wellesleyparkhotel.com

From £35.00
01493 842116

THE WHITE LODGE

Award winning family owned Guest House. Spotless rooms. All en suite showers. Quiet area. Fast free WiFi. Breakfast included in room rates. Some sea view rooms. Free parking directly outside. Number one on TripAdvisor.

19 Marine Crescent,
Great Yarmouth, NR30 4ET



bookings@thewhitelodgenorfolk.com
www.thewhitelodgenorfolk.com

From £60.00
07919 993865

WILLOWS GUEST HOUSE

We are a short walk to the seafront and all the attractions and restaurants in Great Yarmouth and we look forward to welcoming guests for a pleasurable stay. Our guest house has rooms with great sea views and a welcoming dining room for a relaxing home cooked breakfast.

26 Trafalgar Road,
Great Yarmouth, Norfolk, NR30 2LD



willowsguesthouse2017@gmail.com
www.willowsguesthousegy.co.uk

From £40.00 single
01493 332335/07950 904471

WOODS END GUEST HOUSE ★★★ Visit Britain

Woods End is a fine Victorian town house converted to a private family run guest house set in one of the best parts of town. Bedrooms tastefully decorated, fully ensuite and hospitality trays. Convenient for shops and seafront. Full breakfast with table service & choice of menu.

49 Wellesley Road, Great Yarmouth,
Norfolk, NR30 1EX



woodsendinguesthouse@btconnect.com
www.woodsendinguesthouse.co.uk

From £60.00
01493 842229

HEMSBY

BELLE AIRE HOLIDAY PARK

Picture sandy toes, serene sunset beaches, and the aroma of vinegar-doused chips. In Hemsby, Norfolk, Belle Aire Holiday Park provides the perfect base for exploring miles of sandy beach, the Norfolk Broads, Great Yarmouth, and the quintessential British seaside experience.

Beach Road, Hemsby, Norfolk, NR29 4HZ

belleaire@thefamilyparksgroup.co.uk
thefamilyparksgroup.co.uk/locations/belle-aire-holiday-park

01493 731164

1944 - 2024
80
years



5-STAR FAMILY-OWNED HOLIDAY PARK

Located a short walk to the wide-open beach, Hemsby Beach is a holiday park for the entire family.

From stylish caravans with outdoor decking to luxury lodges with hot tubs, you will find accommodation to suit your family (pets welcome).

On-park is an amazing range of facilities including a heated indoor swimming pool, the Retreat wellbeing space and family fun activities including fencing, archery, a climbing wall, water walkerz, inflatable canoes and body zorbing. In the evening the Quarterdeck Show Bar hosts family-friendly live shows, cabarets, visiting bands and discos, all included in the price of your holiday. Plus enjoy the adjacent Richardson's Family Entertainment Centre and Adventure Play with High Ropes, air hockey, pool or darts, delicious fish and chips from Posh Plaiice – also new for 2024 four lanes of tenpin bowling.


RICHARDSON'S
HEMSBY BEACH
HOLIDAY PARK



Visit richardsonsholidayparks.co.uk

 [Richardsonshemsbybeachholidaypark](https://www.facebook.com/Richardsonshemsbybeachholidaypark)  [@hemsbybeachholidaypark](https://www.instagram.com/@hemsbybeachholidaypark)



SEADELL HOLIDAY CHALETs & SEADELL SHOPS

★★★ Visit England

These detached & semi-detached chalets are fully double glazed & situated about 700 meters from the beach.

They are well equipped for your convenience [mains services operate] & can accommodate up to 6 persons. Personally supervised by ourselves. Parking outside chalet.

Seadell Shops - convenience store, souvenirs, beach goods at entrance to Chalet Park caters for all your holiday needs.

Beach Road, Hemsby, NR29 4HS

enquiries@seadell.co.uk
www.seadell.co.uk

From £130.00 per week
01493 730041

CAVALIER CHALETs

★★★ East of England

Modern brick built 2 & 3 bedroom chalets accommodating up to 6 people situated on a holiday park 600 yards from beach. Close to all amenities serviced by local owner with fully fitted kitchen and bathroom with a full sized bath.

Florida Park, Back Market Lane,
Hemsby, NR29 4HW



www.cavalier-chalets-hemsby.co.uk

2 bed £130.00 per chalet
01493 368188



HOPTON -ON-SEA

Potters Resorts
HOPTON-ON-SEA

All-Inclusive Short Breaks On The Norfolk Coast

Our five star resort has so much value packed into every All-Inclusive Short Break:

- ✓ Full Board Dining
- ✓ Comfortable Accommodation
- ✓ Sports, Leisure & Activities
- ✓ West End Quality Entertainment
- ✓ Inclusive Drinks

Request a Brochure now at www.PottersResorts.com

MAUTBY

LOWER WOOD FARM COUNTRY COTTAGES

★★★★ /
★★★★★
Gold

In the Country near the Sea. Complex of Eight family holiday cottages sleeping from 4 to 9 guests. Indoor Heated Swimming Pool, Play Barn, grassed play areas, BBQ's. Weekly lets or short breaks. Easy drive to all the top Norfolk attractions and beaches.

Browns Lane, Mautby,
Norfolk NR29 3JQ

info@lowerwoodfarm.co.uk
www.lowerwoodfarm.co.uk

07713 509366



SCRATBY

THE ANCHORAGE

Beach front with sea views. Quiet, peaceful spot. Four bedrooms and two bathrooms. Sleeps up to eight, laundry included. Free parking and free wifi. Dogs welcome by arrangement. Pub and shop within walking distance.

33 The Esplanade,
Scratby NR29 3NZ

michael.debbie@btinternet.com
www.anchoragescratby.com

From £600 per week
07719 012596



SCRATBY HALL CARAVAN PARK

★★★★ AA

Scratby Hall Caravan Park is a peaceful, rural site close to the Norfolk Broads. An exceptionally well maintained park, dog-friendly and in beautiful surroundings. We are approximately 1 mile from the beach and 5 miles north of Great Yarmouth.

Thoroughfare Lane, Scratby,
Gt Yarmouth, Norfolk, NR29 3SR

scratbyhall@aol.com
www.scratbyhall.co.uk

From £15
01493 730283



SUMMERFIELDS

Parkdean Resorts Summerfields Holiday Park has it all - great accommodation, a relaxed atmosphere and plenty of things to do nearby. Book Now!

Summerfields Holiday Park,
Scratby, Norfolk, NR29 3NW

parkdeanresorts.co.uk



WINTERTON -ON-SEA

MILL FARM ECO BARNES

Stylish self-catering barns, sleeping 2, 4 and 8. Our beautiful barns are full of character offering stylish and relaxing eco-conscious holidays. Dogs welcome. Games barn, off-road parking, EV charger and within walking distance of the beach.

Mill Farm, Hemsby Road, Winterton on sea, Norfolk, NR29 4AE



emma@millfarm-ecobarns.co.uk
www.millfarm-ecobarn.co.uk

From £100 a night
07900 376 462





This Holiday and Short Break Guide has been produced by Visit Great Yarmouth and has been designed by tms-media.co.uk

TMS[®]

Visit Great Yarmouth is the trading name of Greater Yarmouth Tourism and Business Improvement Area Ltd (GYTABIA) and is the official Destination Management Organisation (DMO) for the Greater Yarmouth area .



www.visitgreatyarmouth.co.uk